



Ponemah Video

Powered By Noldus MediaRecorder

Be confident in your results using synchronized video data for visual verification

DSI has partnered with Noldus Information Technology, a leading solution provider for human and animal behavioral research for 25 years, to offer scientists an integrated video experience by synchronizing DSI physiologic data with video captured via Noldus MediaRecorder.

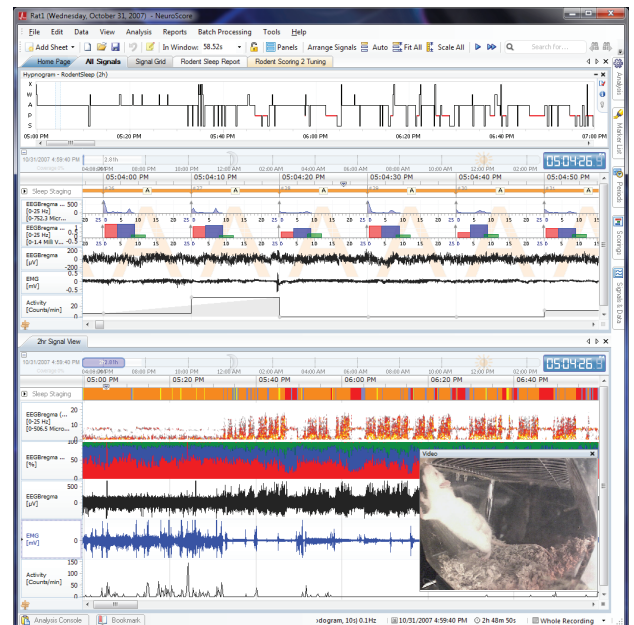
Get More Out of Your Research

Stop guessing at what might have caused your results. Gain greater insights and understanding into your result using the Ponemah & Noldus MediaRecorder combined video solution to visualize what happened. Verify physiologic events, associate behavioral changes to your physiologic data, or help determine the cause of artifacts in multiple research areas, including:

- Seizure
- Sleep
- Behavioral research
- Traumatic brain injury
- Movement disorders

Succeed with Ponemah Video

- Synchronize up to eight video cameras with physiologic signals for better interpretation of your data.
- Acquire high quality video recordings in synchrony with Ponemah, or independently.
- Effortlessly view, browse, and synchronize data using sophisticated graphic and numeric displays.
- For CNS studies, bring your synchronized video and physiologic data into DSI's NeuroScore software for further analysis.



Synchronize video for visual verification of physiologic events

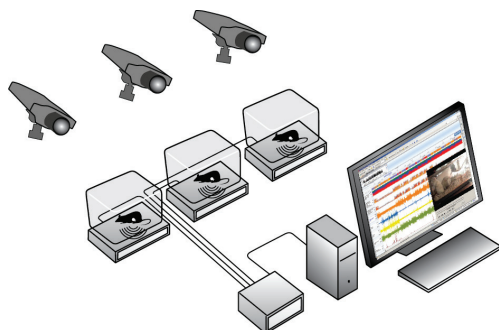
Playback synchronized in real-time or step through data manually using NeuroScore post acquisition analysis.

Contact your DSI representative today for a free 30 day trial offer.

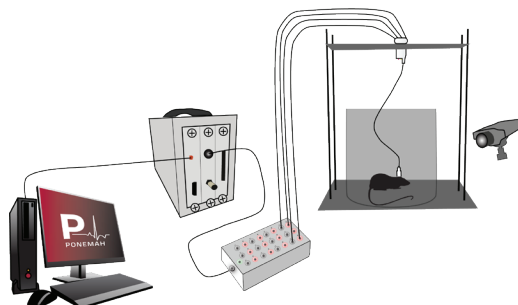
Versatile Video Integration

Easily add video to any hardware setup and import your combined physiologic and video data into other software applications, including DSI's NeuroScore, for continued analysis.

Implantable Telemetry



Tethered Analog EEG



Compatibility

Compatible with the latest Ponemah releases of v5.x and v6.x. Please see the Ponemah Version Matrix for specific version compatibility.

This integrated solution supports IP and GigE cameras. As a stand-alone application, the MediaRecorder can record from USB cameras (web cameras), IP cameras, and more.

Learn more about Ponemah software at www.datasci.com

Learn more about Noldus Animal Behavior products at www.noldus.com