



FinePointe v2.6.0

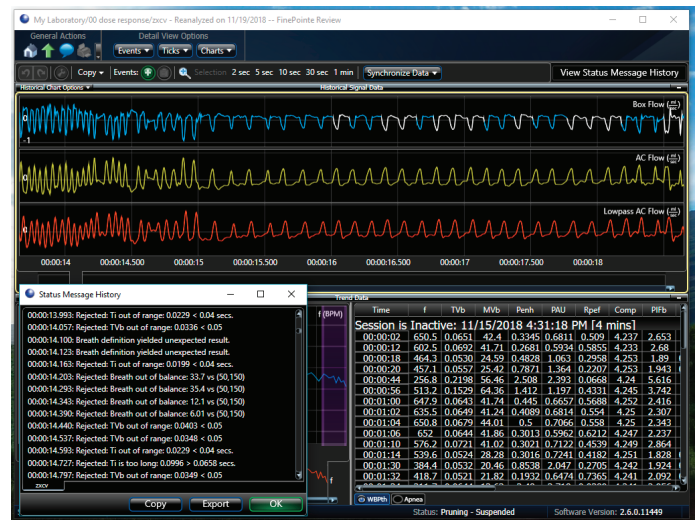
Designed to Manage Buxco® Respiratory & Inhalation Instrumentation

Buxco FinePointe software is powerful and easy-to-use for collecting, analyzing, and reporting life science data.

Respiratory Enhancements

Improved Rejected Breath evaluation criteria

Enhanced Signal Presentation - An option has been added to display multiple presentations of the physiological signals being analyzed during the Review process. Previously the only signal presentation graphically displayed was an un-filtered version of the acquired signal. The signal analysis algorithms create multiple versions of the acquired signal with different filtering techniques to aid in the analysis process. The filtered signals will have different morphologies due to the filtering being applied. Viewing both the filtered and un-filter versions of the signal will provide a better understanding of why certain breaths are marked as "Rejected Breaths". This will only be available for data collected on V2.6.0.



Enhanced "Status Message" Log File – The Rejected Breath log file that was introduced in version 2.5 has been enhanced and now includes:

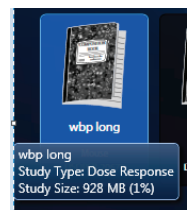
- Elapsed time of rejected breath
- Reason for breath rejection
- Parameter value that triggered rejection (out of limit value)
- Lowest acceptable value of parameter causing rejection
- Highest acceptable value of parameter causing rejection

The Rejected breath log can be copied to the clip board or Exported.

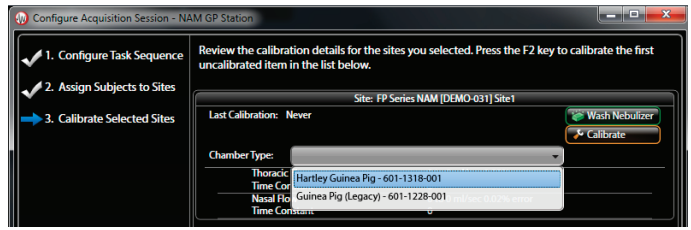
Both of the above enhancements will be beneficial when working with Technical Support to adjust XLM file-based algorithm attributes to reduce the number of Rejected breaths within a dataset. Upgrading to V2.6.0 is not necessary to take advantage of the "Enhanced Log File" feature as your Study can be sent to Technical Support to be reviewed with V2.6.0.

Study icon detail in mouse-over text – The detail presented in the FinePointe homepage mouse-over text for Study icons has been enhancement to include "Study Type name".

MS Excel status performance improvement – Improvements have been made to how FinePointe tracks the status of MS Excel which translates into a quicker response time when accessing features that utilize MS Excel such as loading Studies.

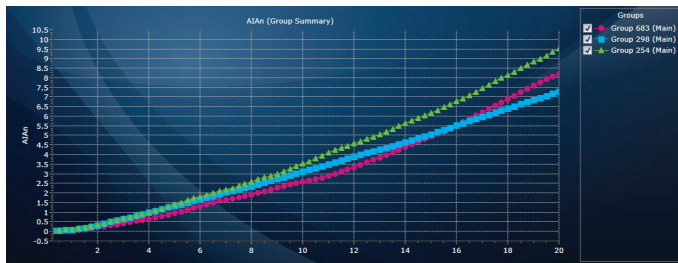


Expanded Chamber Support - FinePointe now has the ability to store calibration data specific to different chamber versions within the software. This allows the user to select the chamber type being used by model number. The calibration information for the chamber model selected will automatically be loaded in the analysis software. This allows different chamber designs for the same species (e.g. legacy versions of chambers) to be supported. Previously only the most current chamber design for a specific species was supported.



Inhalation Enhancements

Real-Time Accumulated Inhaled Aerosol - FinePointe now integrates each breathe with the digitally measured live aerosol concentration. By doing so, the researchers is presented with an unprecedented with real-time parameter called Accumulated Inhaled Aerosol (AIA), only available with the DSI Buxco Inhalation System.



This parameter represents the total amount of aerosol the animal has breathed in, and is available for each respiratory monitored animal. By utilizing this new feature, researchers have a more complete picture of the delivered dose (DD) yielding better data and more accurate dose/effect relationship.

Furthermore, if the DD is known as a part of the experiment, the user can choose to remove the subjects that have reached that target. By choosing this approach, homogenous deposition can be achieved, reducing animal count and tightening the study standard deviation.

Multi-Nebulizer Support - DSI has released the Multi-Nebulizer Plenum to increase the Aerogen Nebulizer capacity threefold. In order to maintain precise delivery and steady aerosol concentration, FinePointe now takes into account all of the connected nebulizer's efficiencies to have them act in unison. By doing so, the seamless integration continues on with new hardware releases.

