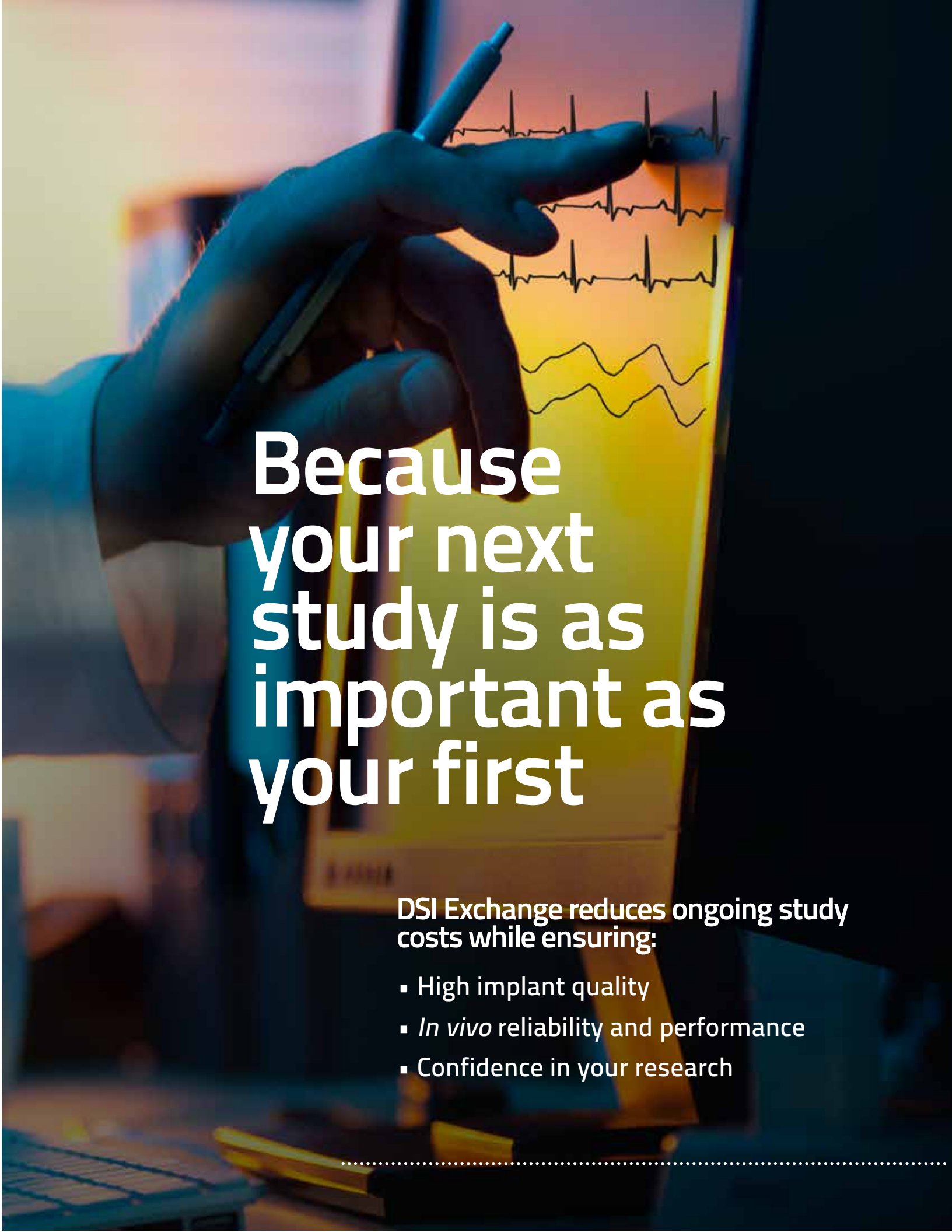




---

# DSI Exchange



A hand in a white lab coat sleeve holds a blue pen, pointing to a heart rate monitor (ECG) waveform on a computer screen. The background is a blurred laboratory setting with warm lighting. The text is overlaid on the screen area.

# Because your next study is as important as your first

DSI Exchange reduces ongoing study costs while ensuring:

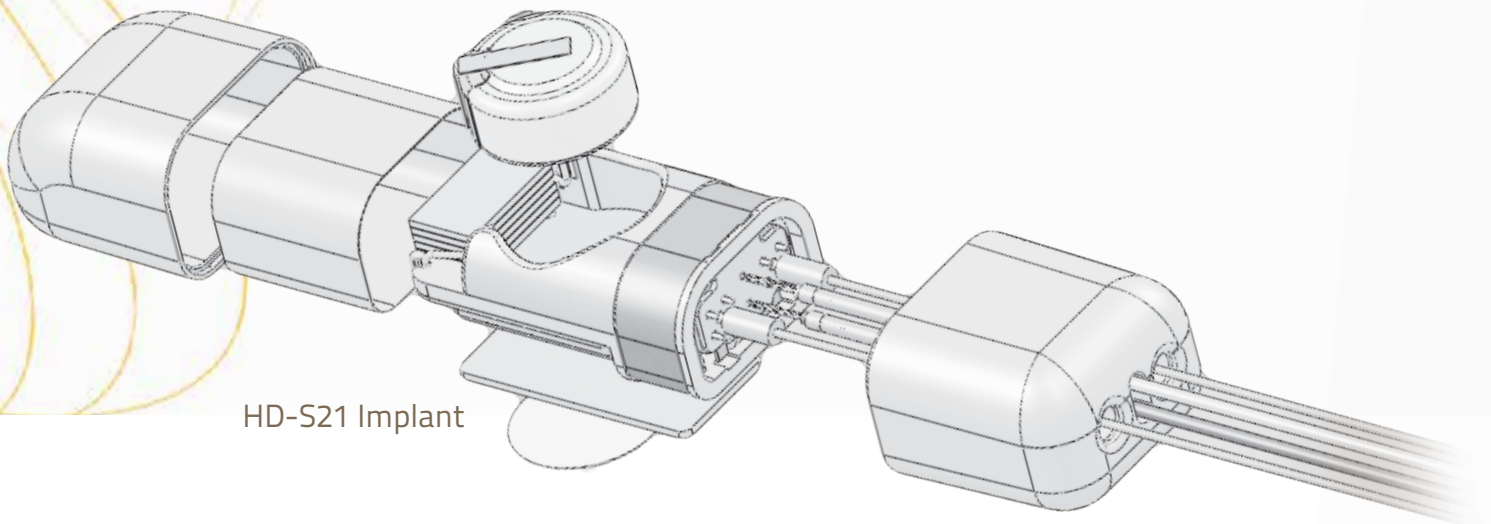
- High implant quality
  - *In vivo* reliability and performance
  - Confidence in your research
-



# DSI Exchange

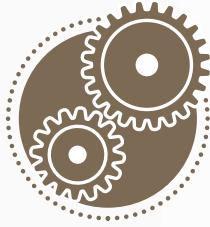
DSI Exchange allows customers to exchange their used telemetry implants for replacement implants at a fraction of the original purchase price.

We ensure that each implant manufactured as part of DSI Exchange meets or exceeds design specifications for guaranteed performance and quality. Participating in DSI Exchange contributes to a decrease in the overall cost of each customer's study.



HD-S21 Implant

# What Goes into DSI Implants?



## Construction:

- Each implant is hand assembled by DSI's highly skilled technicians and receives 100% inspection to ensure that all components meet our quality standards
- A new battery is installed to guarantee functionality over the warranty period
- Several steps ensure that a biocompatible device guaranteed to perform to specifications *in vivo* is delivered:
  - Packaging in a biocompatible housing
  - Attachment of biopotential leads and catheters to provide signal fidelity
  - Pre-shipment sterilization



## Calibration:

- Mechanical and electrical testing of all components to guarantee optimal functionality
- Full calibration of each signal followed by testing to ensure accuracy specifications are met or exceeded when used as intended. Signals include: temperature, pressure, biopotential, and respiratory impedance
- Each implant includes a calibrations label on the sterile package to document that the device has been calibrated for accuracy



## Certification:

- Each implant shipped from DSI is guaranteed to function over its warranty period
- Exchanged implants are purchased for a fraction of the cost of new devices, which reduces ongoing study costs while maintaining data quality and accuracy
- Use DSI implants with confidence; when questions arise, our Technical Support, Customer Service, and Sales teams are here to help



# DSI Exchange Manager: A Matter of Convenience

At DSI, we recognize the importance of starting each study sooner. The DSI Exchange Manager program provides convenient implant inventory management and streamlines the exchange ordering process.

## Convenient Implant Tracking

Upon completion of a study, simply return used implants to DSI. Returned implants will be efficiently processed through DSI's inventory management system. DSI will send a monthly statement of total implant inventory held at DSI.

## Streamlined Ordering Process

Minimize implant transit time and the potential for unnecessary delays by selecting implants from your total implant inventory at DSI. DSI will ensure that each implant meets or exceeds design specifications for guaranteed performance prior to shipping.

---

# Pre-Pay for Your Telemetry Implant Exchanges

- Maximize your budget and purchase implants according to your budget cycle
- Secure DSI's current exchange pricing
- Simplify ongoing order processing with an initial purchase requisition

To learn more about the Exchange Manager and Pre-pay Exchange programs, contact your DSI representative or visit [www.datasci.com](http://www.datasci.com).

HEADQUARTERS AND  
NORTH AMERICAN SALES:  
+1-800-262-9687 (U.S.)  
+1-651-481-7400 (Int'l)  
[sales@datasci.com](mailto:sales@datasci.com)

EUROPEAN SALES:  
Tel: +31-13-5479356  
[europe-sales@datasci.com](mailto:europe-sales@datasci.com)

ASIA PACIFIC SALES:  
Tel: +86-21-50793177  
[DSI-shanghai-office@datasci.com](mailto:DSI-shanghai-office@datasci.com)

**DSI**™

Better Data. Better Science.