



Signal Interface

Seamlessly Integrate and Synchronize Your Laboratory Tools with DSI Telemetry

The new Signal Interface is a flexible, robust solution for acquiring non-telemetric analog or digital signals and synchronizing them with your telemetry data in Ponemah v6.50. Access the full potential of your data by creating an integrative, comprehensive study when combining telemetry with tools such as:

- Langendorff isolated heart perfusion system
- Pressure catheters
- Blood flow meters
- Running wheels and treadmills
- Stimulus delivery tools
- And more!

Setup is fast and easy when using Ponemah v6.50 with flexible options for signal types, allowing you to customize the way your signals are acquired. Data analysis is also more flexible than ever with Ponemah v6.50's new EDF File Writer, expanding compatibility with your existing analysis tools.



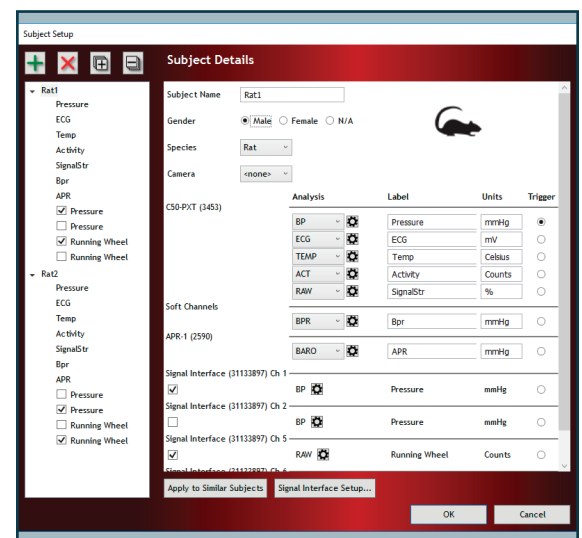
Signal Interface with four source inputs.



Signal Interface shown with PanLab running wheel.

Specifications	
Software compatibility	Ponemah v6.50 Windows 10 operating system
Outputs	USB 3.0 to MX2
Inputs	4 Analog BNC connections 8 Digital connections
Signal Synchronization	Average +/- 4ms
Power	Power over MX2

Contact DSI today to discuss how the Signal Interface may expand your research possibilities.



Set-up is performed within the Ponemah software interface.