

# Ponemah v6.50

## Powerful data collection and analysis for preclinical studies

Ponemah™ is a complete physiologic data acquisition and analysis software platform used by researchers to confidently collect, accurately analyze, and quickly summarize study data. See your data in a whole new way with the capabilities and enhancements of Ponemah v6.50 added to Ponemah's foundation of flexible, smart, and easy-to-use features.

### Ponemah v6.50 New Features:

#### Signal Interface Support

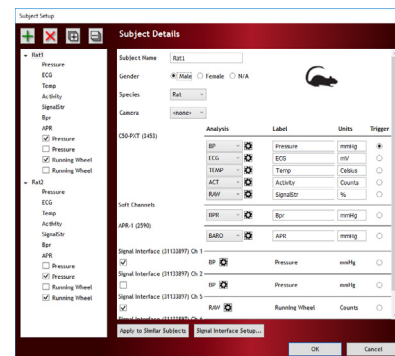
Create an integrative, comprehensive physiologic study that accesses the full potential of your data by seamlessly integrating and synchronizing your laboratory tools with DSI telemetry using the new Signal Interface.

Extend your study design possibilities by combining telemetry with analog and digital signals from research tools like:

- Running wheels and treadmills
- Blood flow meters
- Isolated heart perfusion systems
- Pressure catheters
- Stimulus delivery tools
- And more!



Compact design fits directly on top of the MX2.



Fast, easy configuration in Subject Setup.

### Additional Ponemah v6.50 New Features:

#### EDF File Writer

The EDF file format is a standard in Europe and is quickly becoming recognized in other parts of the world.

- Expand your data compatibility to complimentary 3rd party analysis tools by exporting your Ponemah data in an EDF file format
- Analyze your data in MatLab, LabChart, Spike2, or other software able to read EDF files

#### New Analysis Module Support

- Pulmonary Volume – Calculate respiratory volume, respiration rate, and numerous other parameters with data collected from the PhysioTel Digital L11R implant
- Pulmonary Airflow and Airway Resistance – Analyze pulmonary flow signals derived from the PhysioTel Digital L11R implant, plethysmography chambers, pneumotachs, and respiratory impedance bands

#### Enhancements

- Increase your study cohort with continuous, simultaneous data collection from up to 256 channels and up to 32 groups, dependent on acquisition hardware
- Collect respiratory rate and volume data in large animals with the new Physiotel Digital L11R implant

#### Compatibility

- Support for Windows 10 (64 bit)
- Support for Microsoft Office 2007 or later (64 bit)