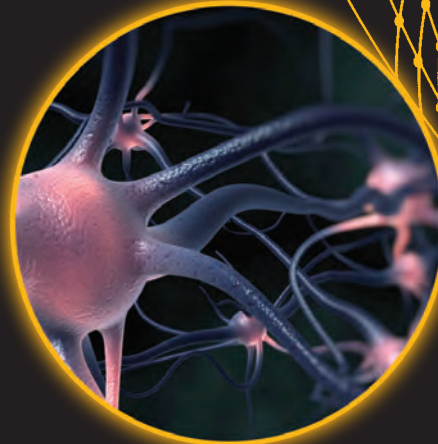


Company Overview

Integrated Physiologic Monitoring for Life Science Research



DSITM

Better Data. Better Science.

COMPANY OVERVIEW

INNOVATION Built on a History of Performance

Data Sciences International (DSI) has been committed to life science research for nearly 30 years. DSI is the recognized leader in physiologic monitoring by offering telemetry, instrumentation, and software and services in support of research. DSI has earned its leadership position through consistent quality and proven performance. Our team of engineers is dedicated to providing new solutions to the market, meeting the growing demands of research scientists around the world.

GLOBAL Presence

Headquartered in St. Paul, MN, DSI develops and manufactures a broad range of implantable and external telemetry devices, data acquisition and analysis software and other scientific instrumentation. DSI also has locations in Europe and Asia offering convenient support to customers in over 40 countries.

DSI's Technical Support and Customer Service teams are available to support researchers using our products and services. DSI works with our customers to ensure they are completely satisfied with their purchase and their studies are successful.

SCIENTIFIC Services

To further partner with researchers to help achieve scientific goals, DSI offers Scientific Services. These services help researchers streamline studies by providing expertise and experience they can trust.

Software Validation Services

Surgical Services

Data Analysis Services

TELEMETRY

Research scientists around the world use the DSI telemetry system to conduct studies involving freely-moving animals ranging in size.

Implantable Telemetry

DSI's telemetry implants provide the most reliable and efficient method of measuring physiologic parameters such as blood pressure, EEG, ECG, respiration, temperature and activity.

External Telemetry

For customers preferring a minimally invasive solution, we offer a Jacketed External Telemetry (JET) system for use in large animal toxicology studies. With JET, more relevant data are collected while animal welfare is dramatically improved.

HARDWIRED Solutions

To complement wireless monitoring, DSI also offers solutions for acute or sub-chronic studies, with the use of digital signal conditioners, plethysmography chambers and glucometers.

SOFTWARE

All of these physiologic signals are digitally acquired and analyzed with powerful software solutions that are developed to be fully compliant with the FDA's Good Laboratory Practice regulations. This high-quality system supports our customers in achieving faster results.





Better Data. Better Science.

DSI ■ 119 14th St NW, Suite 100 ■ St. Paul, MN ■ 55112

information@datasci.com ■ www.datasci.com

T: 651.481.7400

fax 651.481.7404

Toll Free: 800.262.9687

©2013 Data Sciences International ALL RIGHTS RESERVED.

About Data Sciences International

DSI is a pioneering biomedical research company focused on systems physiology and pharmacology. The recognized global leader in physiologic monitoring, DSI offers telemetry, instrumentation, software and services that help advance science. DSI serves many industries including: Pharmaceuticals, Academia, Contract Research Organizations, Biological and Chemical Defense, the Medical Device Industry, Government, and Biotechnology companies. We offer solutions that are tailored specifically to meet the unique research needs of our customers.

