



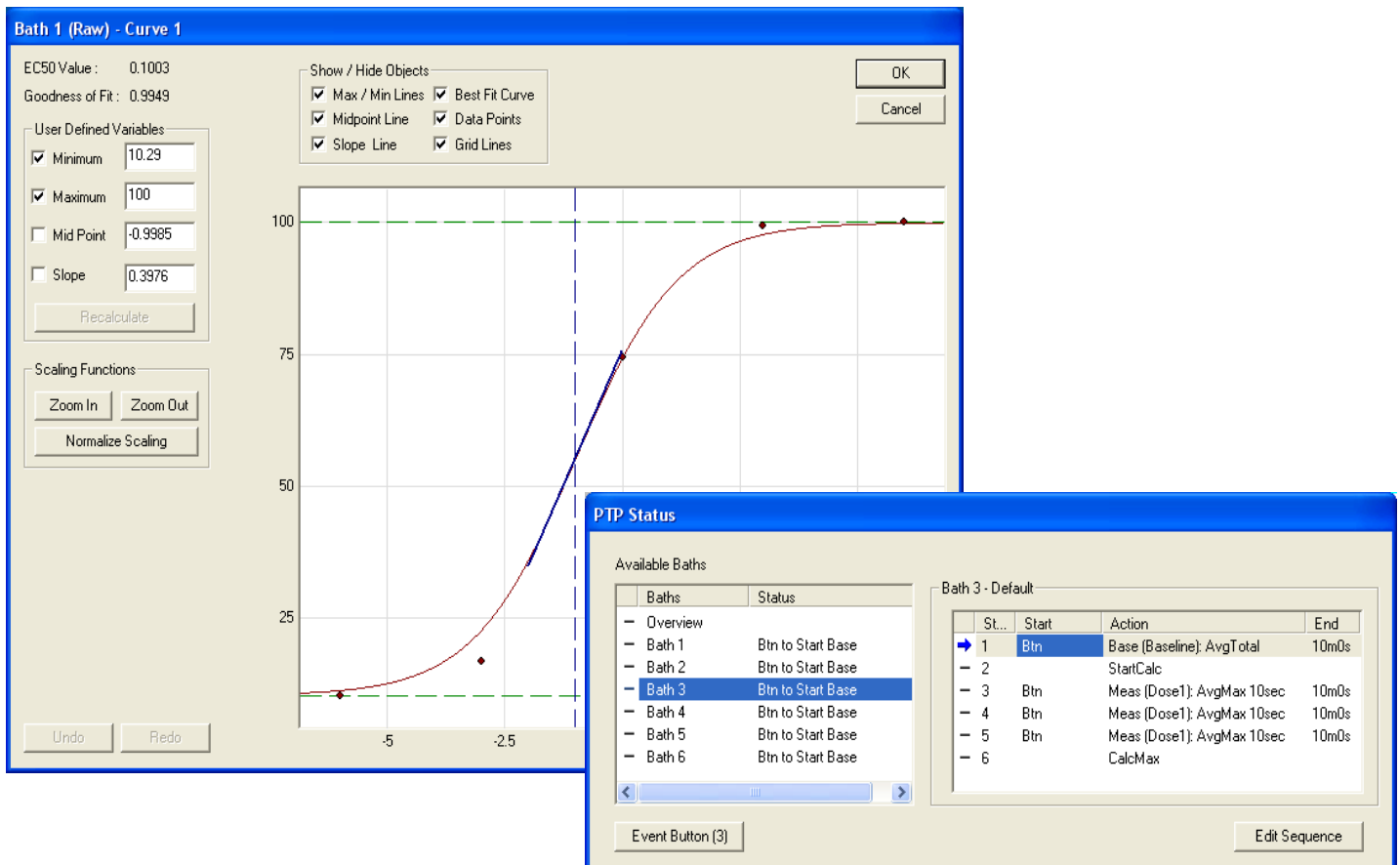
# Ponemah Tissue Platform

The Ponemah Tissue Platform is tailored specifically for isolated smooth muscle and pulsatile tissue applications. An online window allows the user to monitor the progress of each individual bath as it moves through its predefined dose sequence. Built in flexibility allows modification of dose sequences for each bath during data collection and allows each bath to be started independently. This is beneficial when multiple experiments are carried out simultaneously. Furthermore, the data generated is separated into distinct windows as well as data files for ease in monitoring data or performing post acquisition analyses.

researcher. Complementing the data generation is an advanced graphics display that allows the user to visually monitor the entire experiment. This includes continuous monitoring of bath activity, trend plots of calculated values, and EC50 plots for each bath. On-line modification of the graph axes, such as scaling and time base, give the user complete control over viewing of graphics.

The Ponemah Tissue Platform calculates a host of derived parameters. This data is generated in real time and is logged at a period specified by the

This platform lends itself well to automating routine protocols carried out in many physiology and pharmacology laboratories and it offers a great deal of flexibility by allowing the user to define an analysis best suited for their research needs. This research tool is designed to provided continuous data storage and analysis of the experiments either as they occur or during subsequent post processing.



# Technical Data Sheet

## Model PNM-PTP-008 / PNM-PTP-016

### Ponemah Tissue Platform

#### OVERVIEW

The following specifications are specific to the Ponemah Tissue Platform's acquisition capabilities. The Ponemah Tissue Platform software is available in both 8 and 16 channel versions and both acquisition interface units are capable of inputting 16 channels. This design allows 8 channel systems to be easily upgraded to 16 channels.

For further specification on other items contained in the DSI suite of products, please refer to their individual data sheets listed below:

Technical Datasheets are available on the DSI website for download. Please visit [www.datasci.com](http://www.datasci.com).

Description	Bulletin #
ACQ-16	446-70
ACQ-7700 Acquisition Interface	446-66
Universal XE Signal Conditioner	446-97
Basic 4 Signal Conditioner	446-75
Basic 32 Signal Conditioner	446-69
Pulsatile Tissue (PT100W)	446-59

#### HOST COMPUTER MINIMUM REQUIREMENTS

2.0 GHz Pentium IV, 1 GB RAM, Large Hard Drive (Size Dictates Maximum Storage Time), DVD-ROM Drive, AGP/PCI Graphics board Capable of 1280x1024 (1024x768 Minimum), MS Windows® XP Service Pack 2, Keyboard and Mouse.

**NOTE: The Event Acknowledge Unit (PNM-EVENT-8), if purchased, may be configured to use an additional PCI slot separate rather than connecting to the Digital I/O Module, Model 13-7715-05.**

#### ORDERING INFORMATION

Part Number	Description
PNM-PTP-008	Ponemah Tissue Platform - 8 Channel Includes: Software, Software Key, Reference Manual, Note: Requires Acquisition Interface Unit.
PNM-PTP-016	Ponemah Tissue Platform - 16 Channel Includes: Software, Software Key, Reference Manual, Note: Requires Acquisition Interface Unit.
PNM-PTP-0816	Channel Expansion Upgrade - Increases an 8 Channel System to 16 Channels
PNM-PTP-005	P3P Software Upgrade - Upgrades a Current P3P System to Include PTP Capabilities
PNM-PTP-001	PTP Core Upgrade - Upgrades Existing PTP software to the Currently Released Version
PNM-P3P-POST	Post Acquisition Analysis Software
PNM-P3P-USB16	ACQ-16 USB Interface Kit Includes: ACQ-16 USB Acquisition Interface Unit, USB Cable, Reference Manual (Requires Amplifiers)
PNM-P3P-7002	ACQ-7700 USB Interface Kit includes: ACQ-7700 USB Acquisition Interface Unit, USB Cable, Reference Manual (Requires Amplifiers)
<b>Accessories</b>	
PNM-EVENT-8	8 Channel Event Unit
J03353	Y-Cable Adapter to Connect Two PNM-EVENT-8 Units to the 13-7715-05 Module
13-7715-05	32 Channel Digital I/O Module for the 7700 Series Acquisition Interface. Connects PNM-Event-8 to the 7700 Chassis
J03393-1	PCI interface card for PNM-EVENT-8 unit

*Specifications are current at publication.  
Due to DSI's continuing product improvement program, specifications may change without notice.*

*DSI products are not intended for the purposes of diagnosis of disease or other conditions, or in the cure, mitigation, treatment, or prevention of disease, or used as a life support device. Use of DSI products are solely for the purposes of conducting life science research.*