

DSI Reporting

Customizable data organization, analysis, visualization and reporting from a single source.

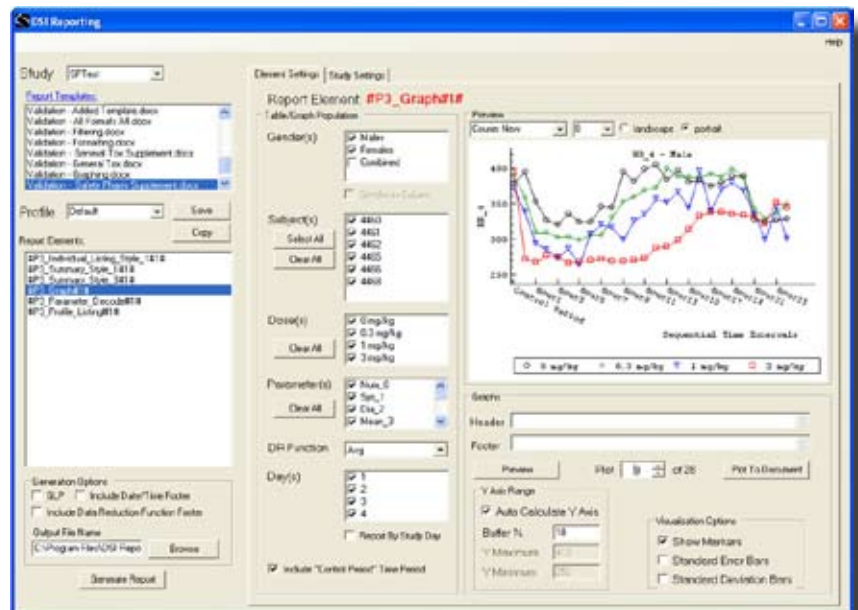
Introducing DSI Reporting – a powerful user-friendly tool designed by real world drug development scientists to organize, analyze, visualize, and report data acquired with the Ponemah software platform.

Traditionally researchers extracted or exported data manually from data acquisition systems to third-party

spreadsheet and graphing programs or developed and maintained separate in-house analysis and reporting systems. These methods are potentially prone to data transfer errors and increased compliance risk for GLP-regulated studies. In addition, time, personnel, and money are spent for quality control, quality assurance, report writing, and/or software development and maintenance

Features of DSI Reporting

- Integrated with Ponemah Physiology Platform for scientific rigor and efficient data transfer
- Tool Tip displays information for each data point: Dose/Animal name, X-axis Label, X, and Y values.
- Many Graph presentations to choose from like smooth line, bar, symbol and 3D/2D
- Point labels display numerical values for plotted point
- Export data to Excel or text file
- Database-driven for data security and uniformity



Reporting elements screen with graph previewed.

activities. Because DSI Reporting is a GLP-compliant system seamlessly integrated with the Ponemah software platform, it is not associated with the scientific risk and resource costs of “patchwork” methods.

Instantaneous results

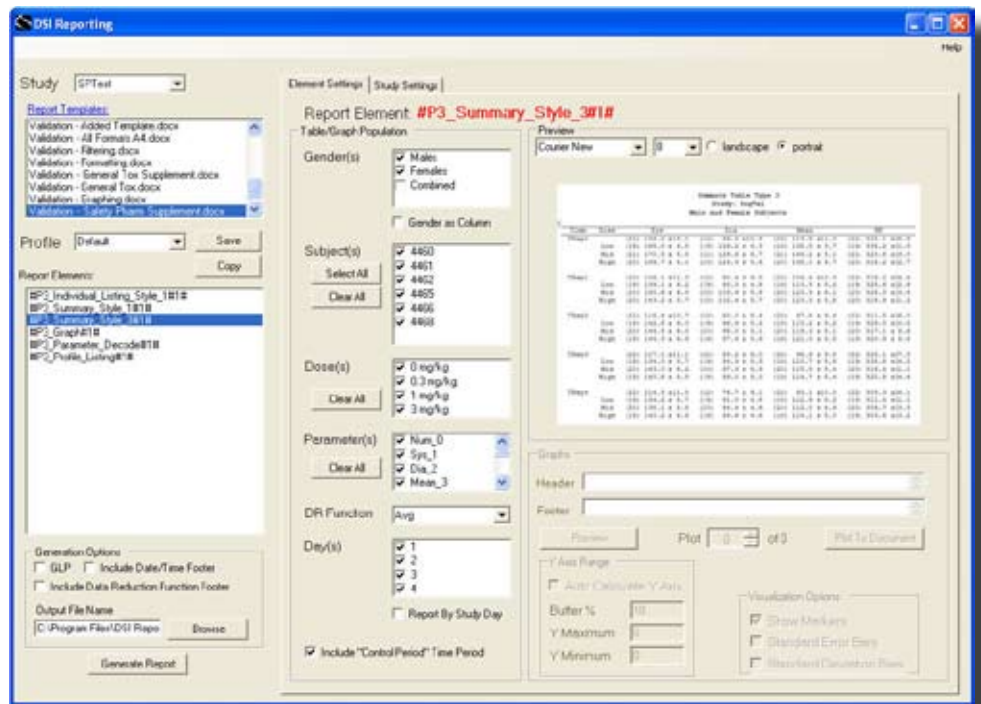
All data acquired with the Ponemah software platform from active and completed studies are available for customizable analysis, visualization, and reporting almost immediately after acquisition.

Efficient and secure reporting

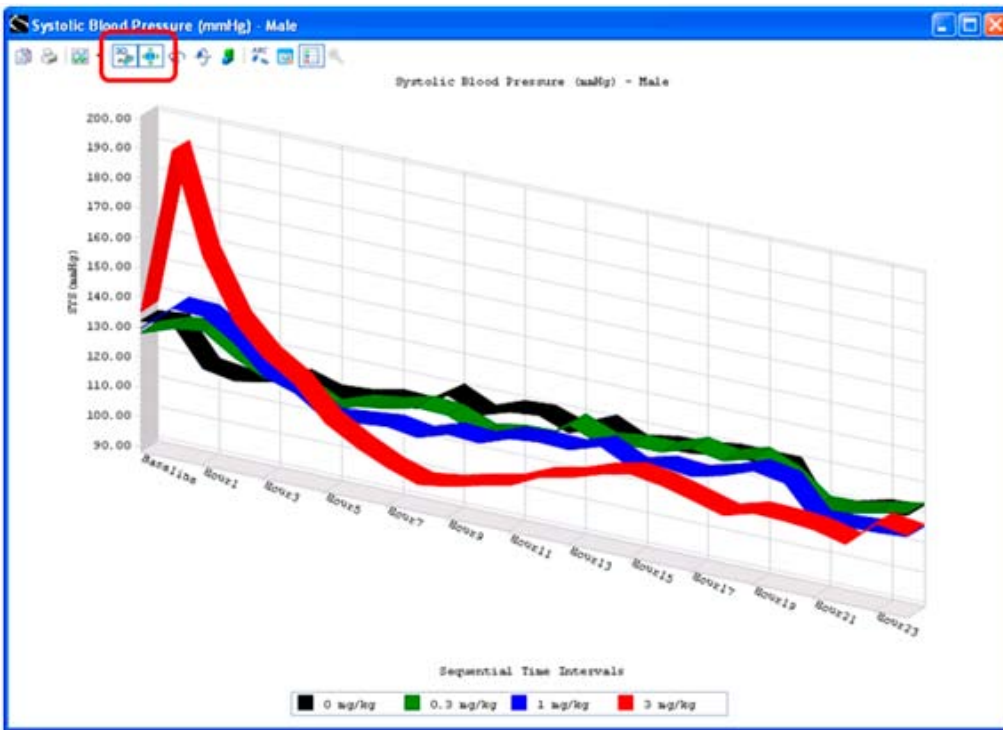
DSI Reporting generates individual derived data listings, group mean summary tables and graphs. This output is directly incorporated into MS Word. The GLP feature locks tables and graphs so no changes can be made to the final report. A date and time footer designates when reports were generated.

Utilizes MS Word 2007

Use your company's templates containing standard text and images. All generated tables and graphs from DSI Reporting can be easily added to customer templates.



Reporting elements screen with a summary report previewed.



Graphical display of systolic BP change over 24 hour study period.

Graphical Display Options

DSI Reporting users have a gallery of graphical displays to choose from in order to meet customer preferences. In addition, the Drill Down feature allows a single mouse click to generate new graphical displays revealing all dose levels for a selected subject. Or, choose to display individual animal data for multiple animals within the same dose group.

System Requirements

- MS Word 2007
- 1G RAM Minimum
- 8G free disk space
- Ponemah version 4.6 or higher
- Study Protocol Option

