



Anipill Temperature Implant

Monitor Small Animals in a Social Housing Environment

Monitoring temperature in small animals should be stress-free for both you and your test subjects. Anipill is a simple and portable system that automatically collects temperature in socially housed environments.

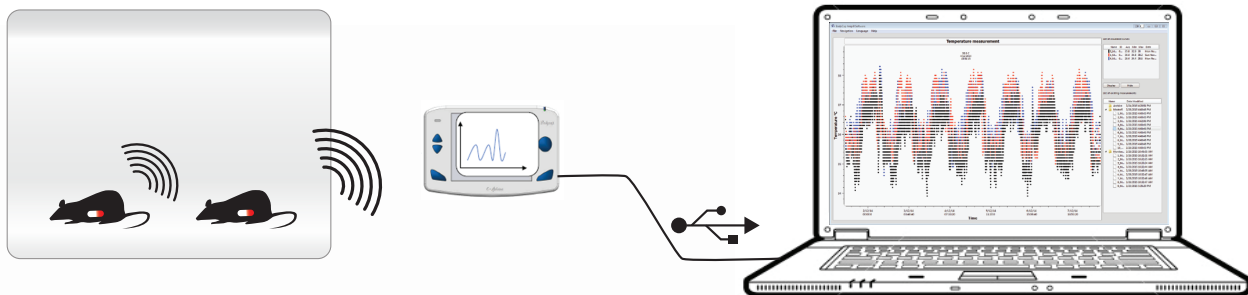
Anipill key benefits:

- Social housing – Collect better data from conscious, freely moving animals in a stress-free environment.
- Automatic data collection – Eliminate the need for manual temperature monitoring.
- Simple Setup – Deploy the system quickly in your research environment.

Specifications

Species:	Mouse, rat, other small animal models
Parameters measured:	Temperature
Battery life:	Up to 12 months, depending on sampling frequency
Implant weight:	1.7 grams
Implant volume:	1.12 cc
Minimum animal weight:	21 grams

See reverse side for additional product specifications.





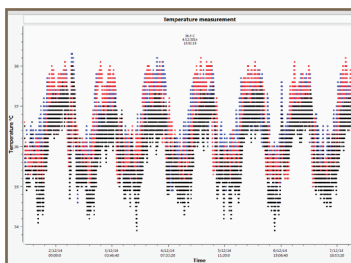
Anipill Capsule



Aniview Monitor



Anipill Activator



Anipill Software

Additional Specifications

Temperature range:	≥25°C
Sampling period intervals:	30 seconds, 2 minutes 5 minutes, 15 minutes
Capsules per monitor:	16*
Range:	3 meters
Maximum monitors within range:	7
Data Storage:	Capsule: 2000 measurements per capsule Monitor: 43,690 measurements per capsule

*FCC regulations in the United States permit 3 capsules for a 30 second sampling interval and 10 capsules for a 2 minute sampling interval.

Battery Life and Data Logging

Sampling Frequency	Battery Life	Duration to Capsule Data Cap
30 seconds	1 month	16 hours/0.6 days
2 minutes	3 months	66 hours/2.7 days
5 minutes	7 months	166 hours/6.9 days
15 minutes	12 months	500 hours/20.8 days

To learn more, visit www.datasci.com or contact your local DSI representative.