

DSI's FinePointe software is a powerful, easy-to-use tool for collecting, analyzing, and reporting life science data. Built with the latest Microsoft technologies, FinePointe software runs on modern Windows operating systems, stores its data using Microsoft SQL Server®, and can operate on a single computer or, if enabled, across a network.

Streamlining the Process of Obtaining Reports

FinePointe software begins and ends with the report. One of the very first steps in creating a study is deciding on a report template and selecting the initial parameters to display.

Once the report is defined, the system guides you through the steps necessary to collect and view your data.

FinePointe software makes ample use of wizards to guide you through important features of the product. Wizards help with calibration, study creation and setup, the management of subjects and groups, and the definition of reports. Settings can be changed at any time.

Just start up, collect data, and view the report.

With a single click, you can export your report to applications including Microsoft Excel®, GraphPad Prism®, and SPSS®.



The "Create Report" wizard, above, guides you through a simple 3-step process.

Your updated report appears as soon as each recording session is over.

Reported parameters, subject grouping, report calculations, and measurement periods all can be adjusted at any time.

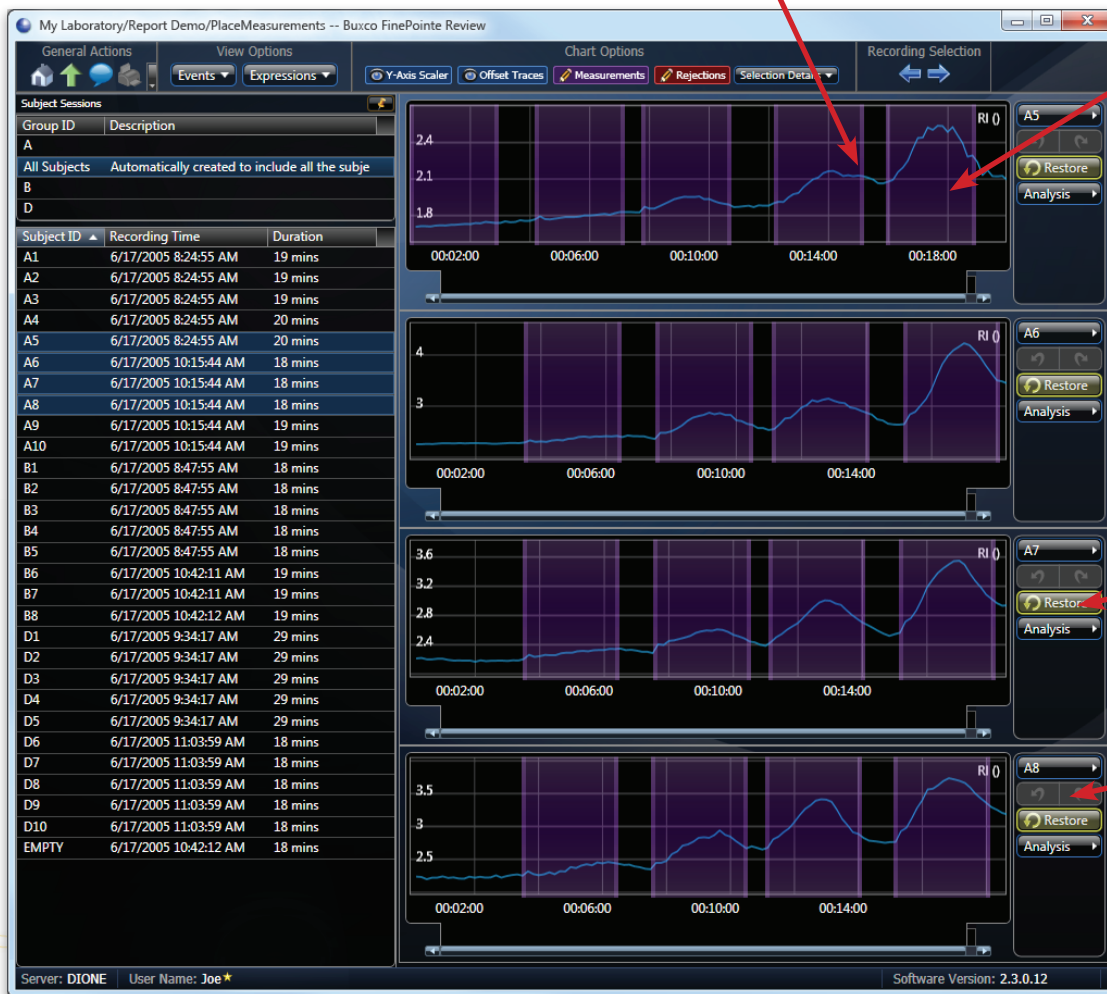
Reporting

While all your data can be exported to Excel, text, Open Office®, and a variety of other statistical packages for report processing, FinePointe software comes with a complete built-in reporting capability. Within a single study, you can setup as many reports as you need. As you acquire the data for your study, the reports are updated to include the new data within seconds.

Reporting measurement intervals are automatically defined and can be easily adjusted

FinePointe Station, the data acquisition component of FinePointe software, will walk you through the steps necessary to collect data for your reports. As you collect data, FinePointe Station saves measurement intervals which are summarized to produce your reports. These measurement intervals are saved with the data and can be reviewed or adjusted at any time. In addition, you can easily identify regions of data that you want excluded from the reports. These excluded regions are also saved with your data. Anytime you add or modify the excluded regions or measurement intervals, your reports are instantly updated, creating a completely traceable report.

Data From Subjects



Adjustable Measurement Intervals

Restore Buttons set the intervals back to their original values

Undo Buttons

Reporting, continued...

Reports summarize subject groups

An important part of reporting is combining data from individual subjects into groups. FinePointe software imposes no limits on the number of subject groupings you can have. Subjects can be added and removed from groups at any time. When groups are changed, the reports which reference those groups will be updated instantly.

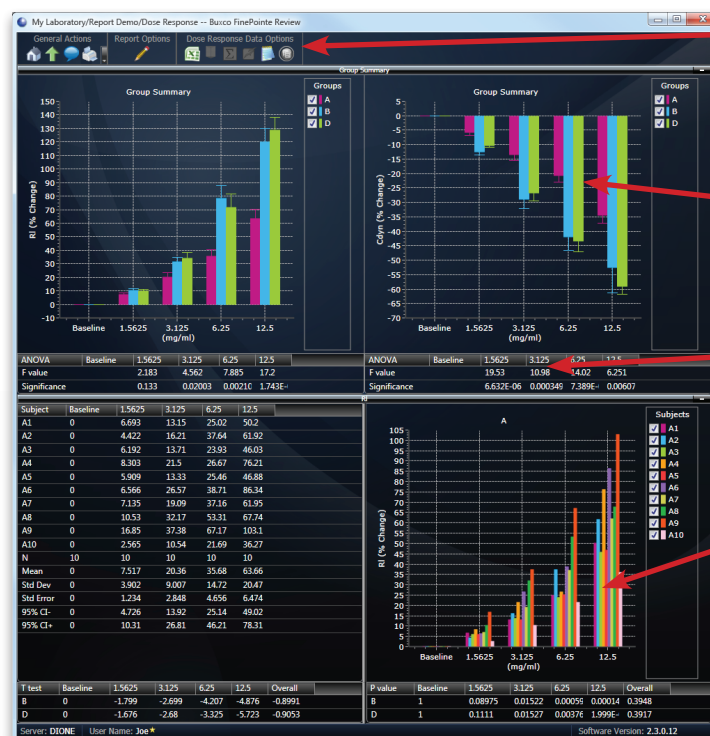
This screen shot shows the page used to configure your groups.



FinePointe software provides common statistics and can export to statistical software

Typically, a measurement is summarized using a function such as maximum, minimum, average, or area. FinePointe reporting supports all these functions and many more. FinePointe reporting also provides common statistics: including F-test, p-value, t-test, confidence intervals, standard deviation, and standard error. And if the statistics provided are not sufficient, with a single click you can export the report directly into Excel®, GraphPad Prism™ or SPSS™. The report can be exported to text files, which can be read by any other statistical software program.

All these reporting features mean one thing: you can concentrate on what you need to in order to get your study data, rather than the labor of producing the report. In addition, you can be sure that all the processing is performed consistently and objectively with computer precision. Human errors are substantially reduced, and data is fully traceable and documented.



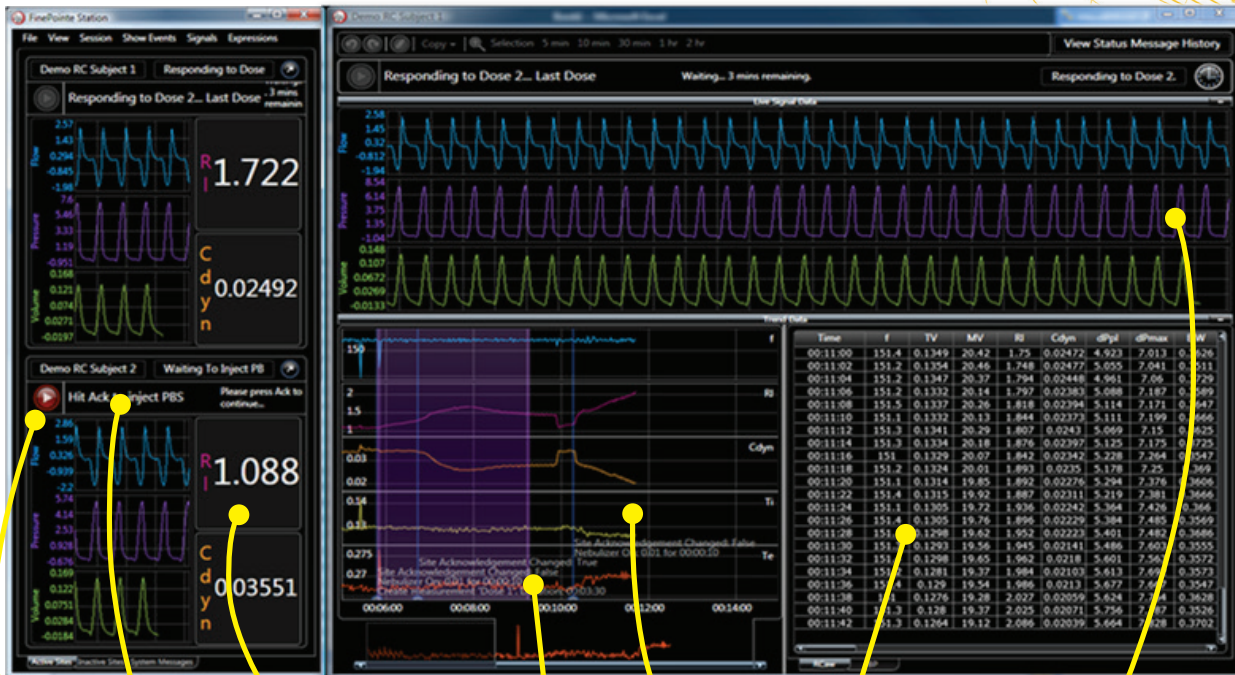
Single-click Export Buttons

Group Summary

Statistics

Group Detail

Data Acquisition with FinePointe Station



Go On Button

Next Concentration Text Indicator

Large Dashboard Area for Key Parameters

Event Marks

Live Tabular and Trend Data

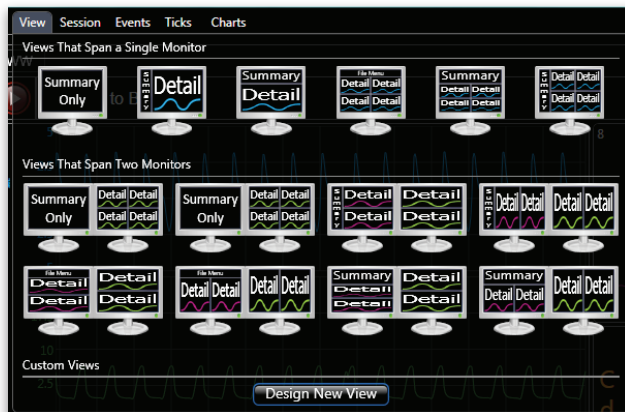
Live Waveform scrolling

FinePointe Station introduces an unprecedented integration of data reporting and data acquisition. It provides all the typical data acquisition features you've come to expect, including live scrolling signals, live analyzed results, and manual event marking. Features you will find in FinePointe Station not available in any other system include:

It prompts you to load your next challenge dose—and it shows you what concentration to administer. This feature is extremely helpful when you are collecting data from multiple subjects and your experiment lasts an hour or more.

It shows you where measurements are marked for reporting. Not only does it place the intervals, but FinePointe software allows you to adjust them too. If you modify intervals by mistake, FinePointe Station remembers the original intervals it chose, allowing you to return to the original intervals.

It has many predefined view arrangements. FinePointe Station provides a robust set of display layouts for you to choose from. With a single click, you can select the display arrangement that suits you best. There is a different set of view arrangements which can take advantage of as many or as few monitors as you choose. Custom arrangement is also available.

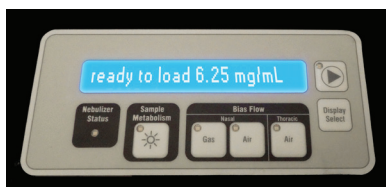


Data Acquisition with FinePoint Station, continued...

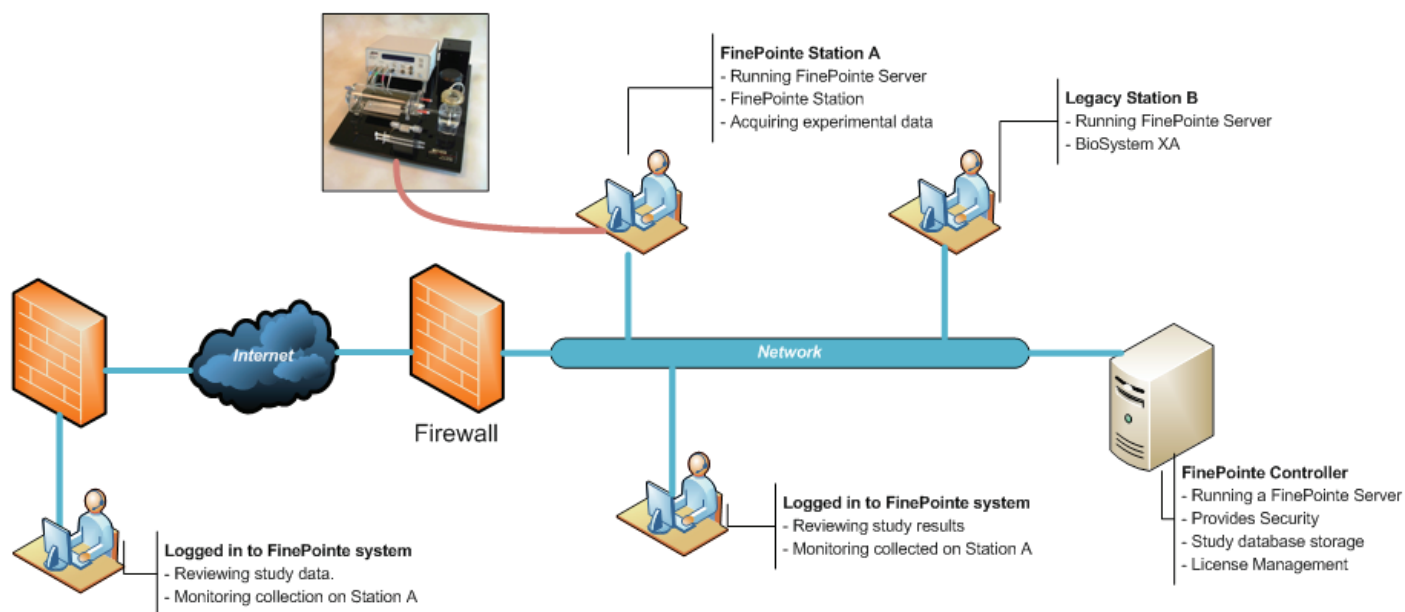
You can control data acquisition from the FinePoint site hardware.

A mouse and keyboard are not always convenient to use during data acquisition. FinePoint sites are designed with a built-in console, which FinePoint Station uses to prompt you with the next concentration right on the site itself.

Others on the network with proper security access can view the live data acquisition simultaneously. If you run Windows on your Apple Mac®, you can run the FinePoint client (Review and Station) on a Mac as well. The network interface is fully encrypted and secure.



Computer control right at the site, with FinePoint built-in consoles.



FinePoint software is network-enabled, offering unique features for convenience, collaboration, and data security.

Analytical tick marks are saved. Tick marks are displayed on the waveform so you can see how the analysis is behaving. In FinePoint Station, this is stored with the study data so you can review the tick marks at any time.

Automatic annotations may obviate the need to place manual event marks. As FinePoint Station walks you through the data collection process, it places event marks to annotate when you performed actions necessary to collect data. When stored in Microsoft SQL Server™, it results in your data being completely annotated.

Review data as it is acquired. The detail display for a single site is the same display presented during review. With this display, you can freeze the signal display and scroll through the entire signal from the moment the subject recording began. You can click on a line of analyzed data and have the system place a cursor on the signal data which produced that data. You can also choose to show classes of event marks to fully annotate all the charts and tables.

When your experiment is complete, you can adjust the interval of data which will be stored in the database. If there is data before your experiment officially began that you want to save, simply increase the recording interval on the display to include all the data you want saved.

See Flow-Volume, Pressure-Volume, or Flow-Flow loops. Simply select a few seconds of data on the signal chart, and select which loop to see. FinePointe presents the loop on the display, and as you move or adjust that interval, the loop refreshes instantly.

Data Review with FinePointe Review

Once data is acquired, it is transferred into the study database in Microsoft SQL Server™. The data is stored completely, including signals, analyzed results, measurement intervals, event marks, and tick information. FinePointe allows you to open that recording and browse through it using a display that looks identical to the display you see during acquisition.

Freely browse your data

From this display, you can zoom in, zoom out, and scroll through all your signal and trend data. In addition, you can find signal data associated with analyzed data (and find analyzed data associated with signal data). You can copy data out using the clipboard in text form or image form.

Reanalyze your data

Within review, should your data analysis require modification, you can perform reanalysis on all your data stored in the study database. This reanalysis is not performed in real-time; it is performed much faster, enabling you to reprocess all your subjects in a few minutes. Once it is complete, your reports will automatically summarize data from the reprocessed result. Because the system does not delete the original result, you can switch back to using the original result if you choose.

Compatibility with Older Buxco Systems

FinePointe software is flexible enough to combine in several different ways with existing Buxco hardware and software.

FinePointe Review supports BioSystem XA data

FinePointe Review - the post-analysis component of FinePointe software - even accepts data collected with BioSystem XA. Multiple BioSystem XA studies can be combined, subjects can be grouped, all of the analysis tools can be applied, and a consolidated report produced.

FinePointe Station supports existing Buxco hardware applications

FinePointe software receives and analyzes signals from general purpose Buxco systems that may be used with whole body plethysmography, resistance and compliance, double chamber, head-out, nose-only systems, and metabolism.